

Infrared Image IR005491.JPG

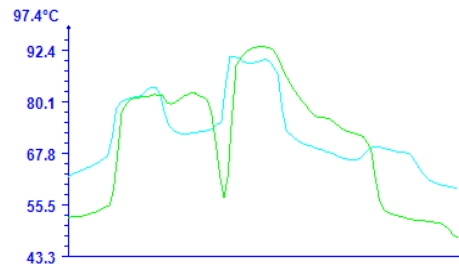
Visual Image

**Information:**

Asset	34 XXX St, Parramatta
Location	Level 1
Switchboard Name	Meter Section
Equipment	63 Amp 3Ø Miniature Circuit Breaker (MCB) – CB Sub Main Control for Ground Level Cafe
Fault Description	Possibly a Termination Fault, but more likely to be an overload. See Note below.
Working Conditions	Normal
Background Temp	24.9°C
Distance	3.0m
Create Time	Thursday, April 15, 2010

**Analyses Table:**

Object Parameter	Value
Max	90.9°C
L1:AvgTemp	74.5°C
L1:MaxTemp	90.6°C
L1:MinTemp	59.5°C
L2:AvgTemp	72.5°C
L2:MaxTemp	93.0°C
L2:MinTemp	47.9°C

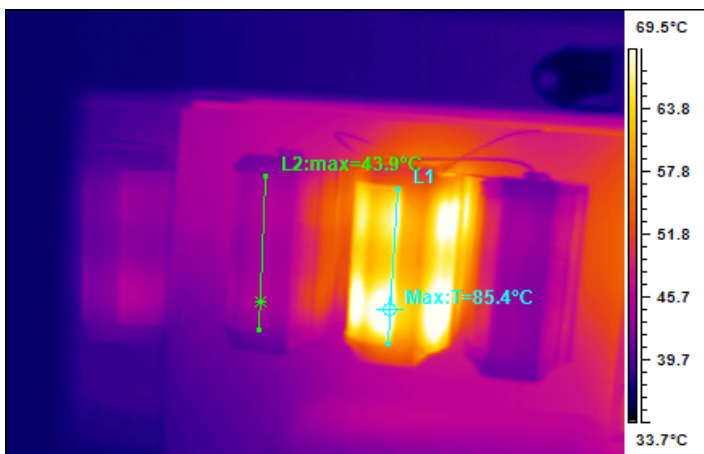


**Comments:**

<b>Fault Rating</b>	<b>Serious Fault - High</b>
<b>Recommendation or Comment</b>	<p>Repair in 2 to 3 weeks. <b>Circuitry appears to be overloaded. Circuit may need upgrading.</b></p> <p>Current was not measured due to space restrictions, so a full assessment could not be reached.</p> <p>If current exceeds MCB rated capacity – replace MCB and reassess.</p> <p>If current is less than 63 amps then re-terminate both line and load side and reassess.</p> <p><b>Note:</b> Oxidation and arcing damage may have occurred at these temperatures. If oxidation and arcing damage cannot be corrected, parts and cable should be replaced.</p> <p><b>Note: Equipment is beyond recommended temperature rise limits.</b></p>

**Corrective Action Taken:**

Date	Signature



Infrared Image IR005492.JPG

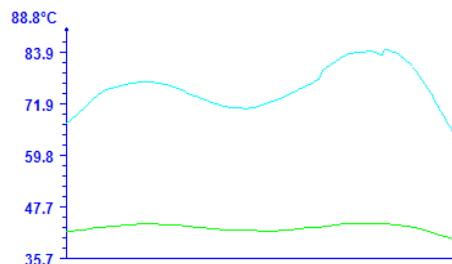
Visual Image

Information:

Asset	34 XXX St, Parramatta
Location	Level 1
Switchboard Name	Meter Section
Equipment	100 Amp 3Ø Fuse Link and Base – Service Fuse Ground Level Shop
Fault Description	Internal Termination Fault or Loose Fuse Link. (Note temperature difference at line and load side). Circuitry appears overloaded – see note below.
Working Conditions	Normal
Background Temp	25.0°C
Distance	3.0m
Create Time	Thursday, April 15, 2010

Analyses Table:

Object Parameter	Value
Max	85.4°C
L1:AvgTemp	77.1°C
L1:MaxTemp	84.5°C
L1:MinTemp	62.3°C
L2:AvgTemp	43.9°C
L2:MaxTemp	43.9°C
L2:MinTemp	40.2°C

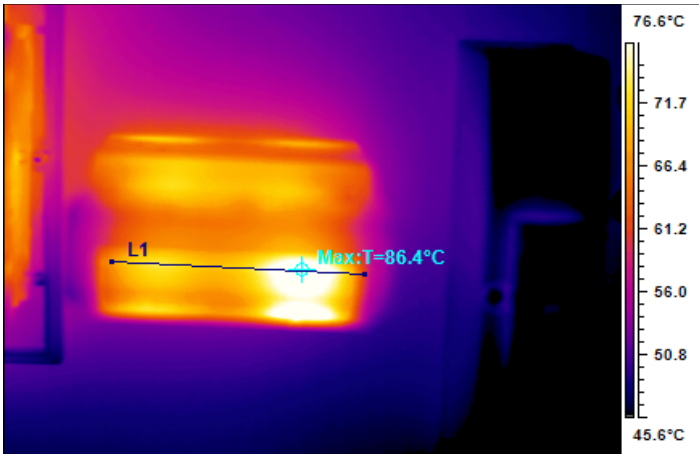


Comments:

Fault Rating	<b>Serious Fault - High</b>
Recommendation or Comment	<p>Repair in 2 to 3 weeks.                  Current was not measured due to space restrictions, so a full assessment could not be reached. Current must be measured to fully assess circuitry.                  If current exceeds Fuse rated capacity – replace Fuse and upgrade the circuit accordingly. If current is less than 100 amps then re-terminate both line and load side and reassess.  <b>Note:</b> Oxidation and arcing damage may have occurred at these temperatures. If oxidation and arcing damage cannot be corrected, parts and cable should be replaced.  <b>Note: Equipment is beyond recommended temperature rise limits.</b></p>

Corrective Action Taken:

Date	Signature



Infrared Image IR005493.JPG

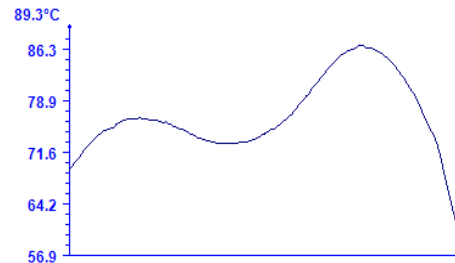
Visual Image

**Information:**

Asset	34 XXX St, Parramatta
Location	Level 1
Switchboard Name	Meter Section
Equipment	100 Amp Fuse Link and Base – Service Fuse
Fault Description	Termination Fault or Loose Fuse Link
Working Conditions	Normal
Background Temp	25.0°C
Distance	3.0m
Create Time	Thursday, April 15, 2010

**Analyses Table:**

Object Parameter	Value
Max	86.4°C
L1:AvgTemp	78.2°C
L1:MaxTemp	86.7°C
L1:MinTemp	59.6°C

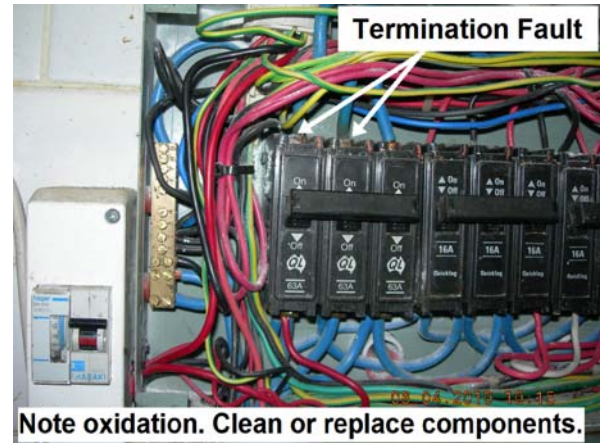
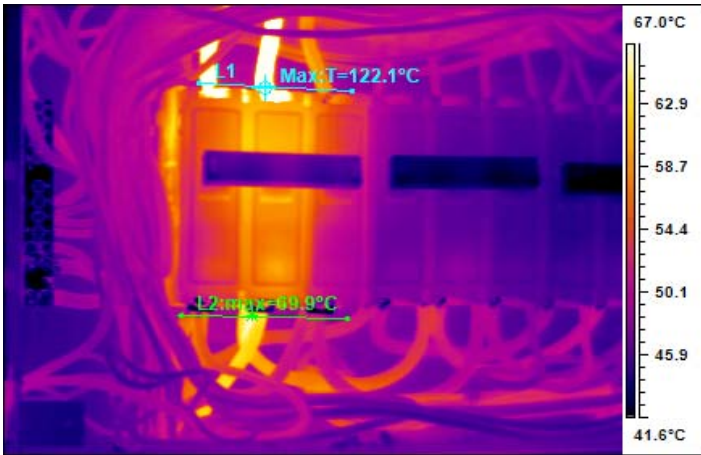


**Comments:**

Fault Rating	<b>Serious Fault - High</b>
Recommendation or Comment	Repair in 2 to 3 weeks. <b>See Notes above</b>

**Corrective Action Taken:**

Date	Signature



Infrared Image IR005499.JPG

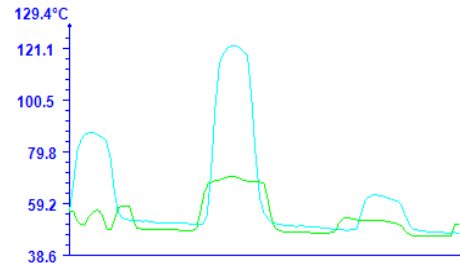
Visual Image

Information:

Asset	34 XXX St, Parramatta
Location	Café
Switchboard Name	Distribution Board 1A
Equipment	63 Amp 3Ø Miniature Circuit Breaker (MCB) – CB Mainswitch
Fault Description	Termination Fault
Working Conditions	AØ 7 Amps, BØ 50 Amps, CØ 31.8 Amps Normal
Background Temp	31.5°C
Distance	3.0m
Create Time	Thursday, April 15, 2010

Analyses Table:

Object Parameter	Value
Max	122.1°C
L1:AvgTemp	65.1°C
L1:MaxTemp	121.9°C
L1:MinTemp	47.5°C
L2:AvgTemp	54.7°C
L2:MaxTemp	69.9°C
L2:MinTemp	46.2°C



Comments:

Fault Rating	<b>Urgent fault - Extreme</b>
Recommendation or Comment	Requires immediate attention <b>Repair ASAP:</b> Oxidation and arcing damage has occurred at these temperatures. If oxidation and arcing damage cannot be corrected, parts and cable should be replaced

Corrective Action Taken:

Date	Signature